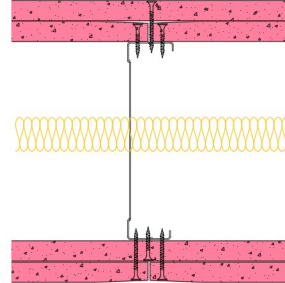


146-B-62(25) - SPEEDLINE System Data Sheet - Version V1 (24-10-23)

SPEEDLINE 146mm 'C' Stud Partition @600mm
Ctrs, with 2x BG Gyproc 15mm FireLine each side,
25mm APR



System Performance Breakdown

Fire Resistance:

BS476 Part 22:1987:

Test Ref & Date or Applied Ref & Report:

Max Height:

Thickness:

Duty Grade: BS 5234: Part 2:1992:

Sound Insulation:

120/120 Minutes (Integrity/Insulation).

BTC 17442F - BRE Report P102396-1011A

Refer to Speedline Specification Clause

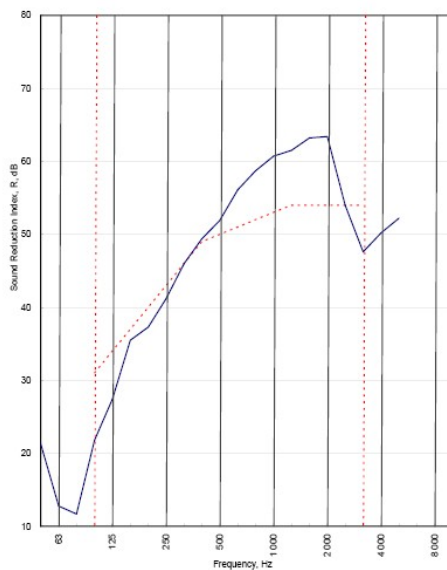
208 mm. (At Base Track, Excluding Finishes)

Severe - Annexes A-F

50 R_w dB, Date Tested or Assessed Against - 70-B-57(25)

Test Code:
H17485AA
Test Date:
14/07/2011

Freq. Hz	R dB
50	21.3
63	12.8
80	11.7
100	21.8
125	27.4
160	35.5
200	37.3
250	41.2
315	46.0
400	49.4
500	51.9
630	56.1
800	58.7
1 000	60.7
1 250	61.5
1 600	63.2
2 000	63.4
2 500	54.0
3 150	47.6
4 000	50.2
5 000	52.2
6 300	
8 000	
10 000	



----- Curve of reference values (ISO 717-1)

Rating according to BS EN ISO 717-1:1997	R_w (C;Ctr) = 50 (-3;-10) dB		
Evaluation based on laboratory measurement results obtained by an engineering method.	$C_{50-3150}$ = -8 dB	$C_{50-5000}$ = -8 dB	$C_{100-5000}$ = -3 dB
	$C_{7,50-3150}$ = -20 dB	$C_{7,50-5000}$ = -20 dB	$C_{1,100-5000}$ = -10 dB

TESTED AT ONE OF THE UKAS
ACCREDITED LABORATORIES
BELOW

B.T.C
(H-Ref on Graph)



B.R.E



AIRO



S.R.L



Customer: Metsec plc Hepsec Division

BTC 17485A: Page 9 of 11



SPEEDLINE Drywall Systems, Adsetts House, 16 Europa View, Sheffield Business Park, Sheffield, S9 1XH.

Tel: 0114 231 8030.

Email: enquiries@speedlinedrywall.co.uk

(As per the requirements set out in ISO/IEC 17025:2017 regarding test data the results stated have been carried out by voestalpine Metsec plc as part of the contract to supply Speedline Metal Sections to SIG Plc)